

Bargello Bliss Table Runner

Finished size 12" x 44"

Fabrics Requirements:

Bargello Bliss

CF3578 Cobalt: ¼ yard (star - points)

CF3577 Amber: ¼ yard (star – pinwheel) CF3574 Cobalt: 5/8 yard (border and binding)

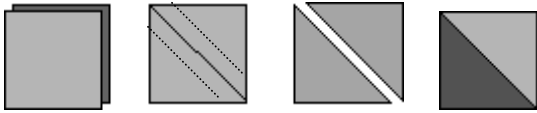
Misty Morning

CF3560 Shore ½ yard (background)

Cutting Instructions		
	First Cut	Second Cut
CF3578 Cobalt - star points	(2) 3½" strips across the width	(20) 3½" squares
CF3560 Shore - background	(5) 3½" strips across the width	(52) 3½" squares
CF 3577 Amber – star pinwheel	(1) 3½" strips across the width	(10) 3½" squares
CF3574 Cobalt - border	(2) 3½" strips across the width	(22) 3½" squares
CF 3574 Cobalt - border	(2) 3" strips across the width	(28) 3" squares
Binding	(3) 2" strips across the width	

Making the Half-Square Triangle Units:

Place squares, right sides together. Draw line from corner to corner. Sew $\frac{1}{4}$ " away from each side of the line. Cut apart on drawn line. Press seams open and trim to 3".



Color Combinations for Half-Square Triangle Units



Make 20
CF3577 Amber/
CF3560Shore



Make 40
CF3578 Cobalt/
CF3560Shore



Make 24
CF3574 Cobalt/
CF3560 Shore

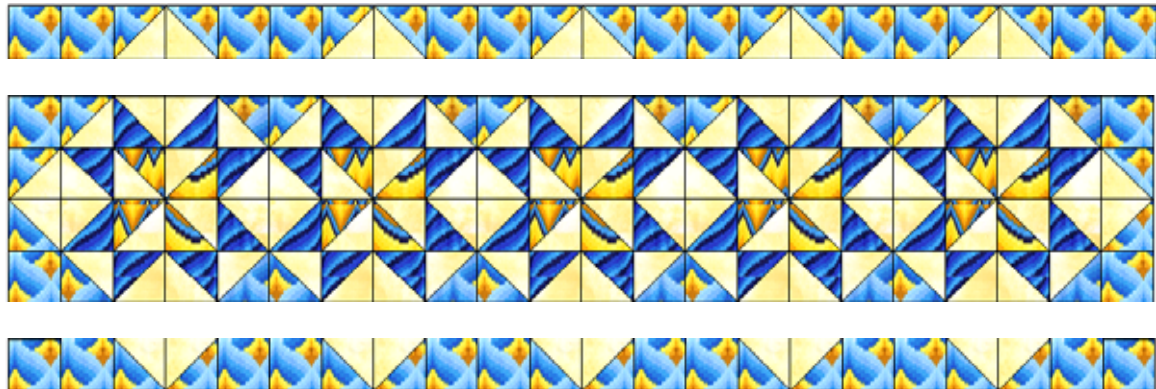
Assembly Instructions

1. Following diagram, arrange triangle units and sew together to form Star block. Make 5.



2. Arrange and join Star blocks as shown to form runner top.

3. Using the diagram as a guide, sew triangle units and squares to form borders. Sew right and left borders to top. Finish by sewing top and bottom borders to top.



Finishing

Layer your quilt top with batting and backing; baste. Quilt as desired, bind the edges and label your quilt.

Designed by Karen Combs © 2004 Clearwater Fabrics

©2004 Karen Combs' Studio Copyright holder grants permission to shop owners to make quilts from this pattern, copy this pattern to hand out to customers purchasing Karen Combs Bargello Bliss collection and teach classes from this pattern.